

Testing MEASURE (Mpe983.exe) communications with Spectrum 10 Server (Sp10.exe)

Run Sp10.exe and enter values as follows. Check File...Test Mode. Close Sp10.exe before running MEASURE Mpe983.exe.

Note: *Test Mode must be OFF in MEASURE and ON in the server.*

Spectrum 10 Scan Method

Instrument ID

Range 1/cm
Min Max Interval

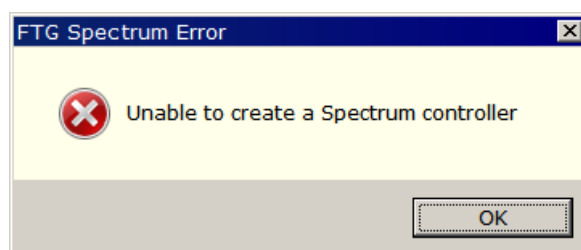
Number of scans Type

Standard file name or numeric value

Specify additional settings in Spectrum 10 .set file

Copy *.scw to C:\Winfilm\Measure, *.bas to C:\Winfilm\Basic32, ZnSeSub.csv to C:\Winfilm\Spectra

9751 data points, so be sure that Sample capacity in File..Configuration..Capacity is sufficient. **Click Setup..Reference Scan <Ctrl+F> before clicking the Scan (Sample) button.** If you install Sp10.exe on a computer without PE Spectrum 10, you get the following ignorable error message:



The examples denoted by _Code.scw illustrate BASIC embedded in the Scan Method. This is recommended! Click <F4> in *Scan Method 3/5 – Control Macros* to embed .bas code. <Ctrl+E> triggers a macro editor. *You cannot merely copy code from the BASIC window since #Reference is not shown there.*

'Sample Scan' Macro

Edit

```
Attribute VB_Name = "Module1"
'#Reference {565B98C7-BE8C-43BB-A12D-D774D1315E12}#1.1#0#C
Option Explicit
Option Base 1
Dim FTIR As FtgSp10.clsDAQ
Sub Main
Dim k%, xDat!(), yDat!()
Set FTIR = New FtgSp10.clsDAQ
With FTIR
.Parameters "R",,,, "C:\Winfilm\Spectra\ZnSeSub.csv", 2
.Scan 0
.GetSample xDat(), yDat()
End With
Spectrum_X = xDat
Spectrum_Y = yDat
MainActivate
End Sub
```

Line 11, Col 8

It is also possible to run the macros with the Spectrum 10 server visible. This is accomplished by replacing

```
Set FTIR = New FtgSp10.clsDAQ
```

with

```
Set FTIR = CreateObject("FtgSp10.clsDAQ")
```